

Effective decision-making for sustainable fishing

Steingrímur Gunnarsson
Sales Manager
February 5, 2019

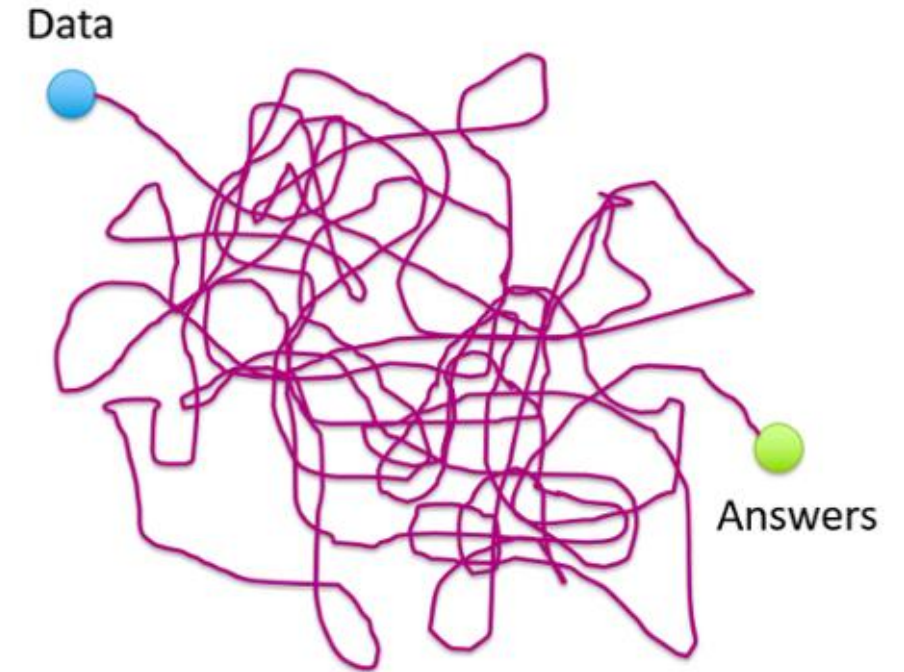


Challenge of manage sustainability data

Fisheries are collecting and storing huge amount of data related to sustainability, from their vessels.

Most fisheries are still facing the same challenges:

- Multiple data entry with risk of error
- Much effort in storing and retrieving information
- Information is not at hand when needed
- Difficult to process historical data



Electronic Logbook

Trackwell Electronic Logbook is a standard solution for reporting mandatory information to fishing authorities.

- Additional information can be linked to catch registrations
- Provide data for certification of sustainability
- Fisheries have access to all catch history of own vessels

The screenshot displays the 'Hafsyn' (Logbook) application window. The interface includes a sidebar with navigation options like 'Catch log', 'Hauls', 'Fishing trips', 'Tables', 'Search for hauls', 'Period', 'Period within year', 'Catch per species', and 'Amount'. The main area shows a detailed log entry for a haul. The 'Start' section includes Date (26.2.2018 15:35), Position (N63°42.85 - W024°18.83), and Depth (175 m). The 'End' section includes Date (26.2.2018 21:34), Position (N63°32.47 - W024°13.94), and Depth (182 m). The 'Fishing gear' is 'Hemmer 470', 'Fishing zone' is 'Eldergjarbanki', and 'Target species' is 'Ufsi'. A 'Catch' table lists species, weight (kg), gutted status, average size (kg), and percent. The 'Map' section shows the location of the haul in the Faroe Islands, with coordinates 65.0°N 29.5°W.

Species	kg	Gutted	Avg. Size kg	Percent
Gulkráfi	4.275	<input checked="" type="checkbox"/>		62.09
Ufsi	1.450	<input checked="" type="checkbox"/>		21.06
Þorskur	1.160	<input checked="" type="checkbox"/>		16.85

Record 1 of 3



Hafsyn Web portal

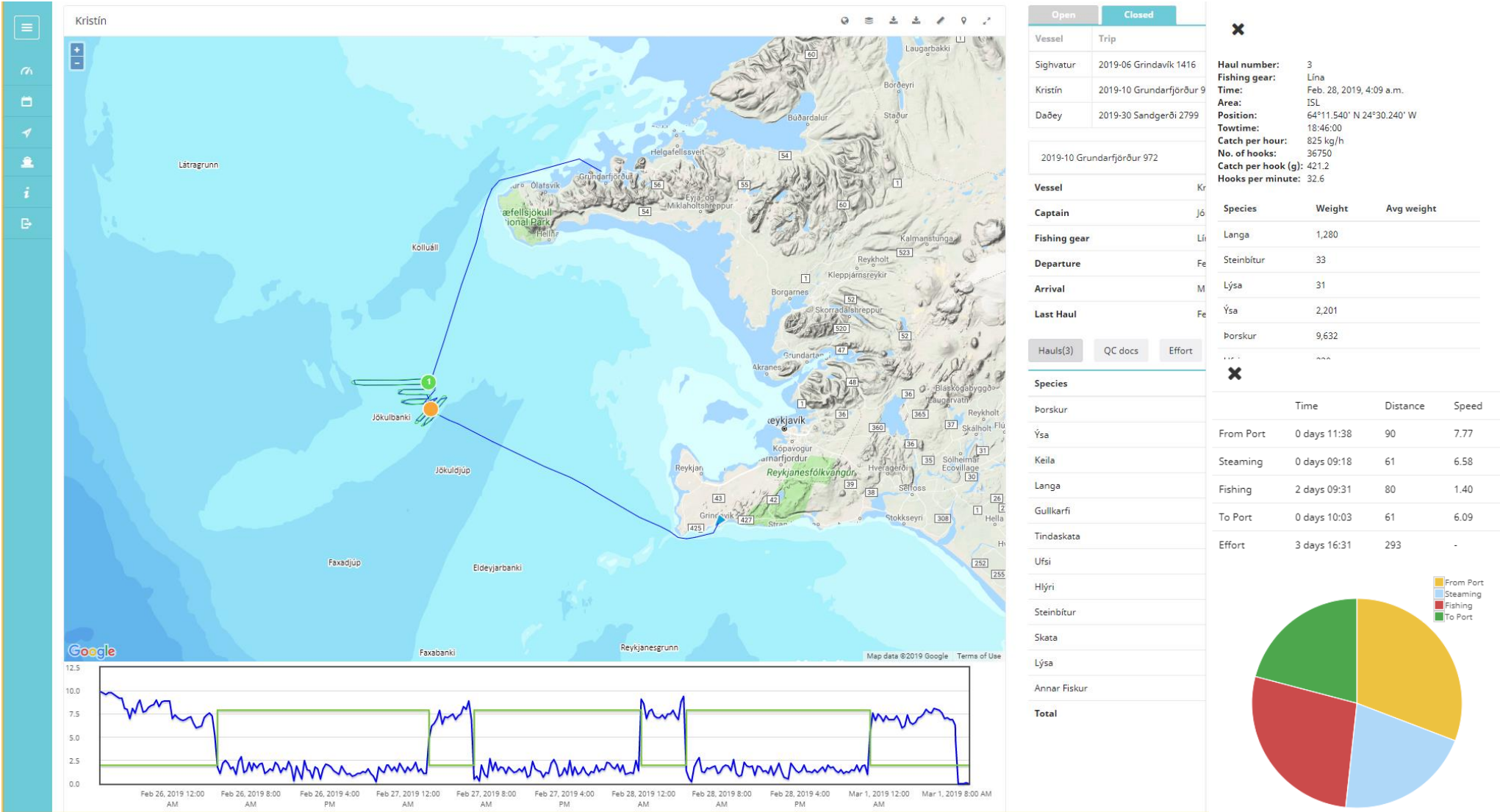
Hafsyn Web Portal is available for fisheries onshore

The system allows users to extract data to view reports that provide comparison of fishing grounds and vessels over a selected time period



Hafsyn Web portal – Trip overview

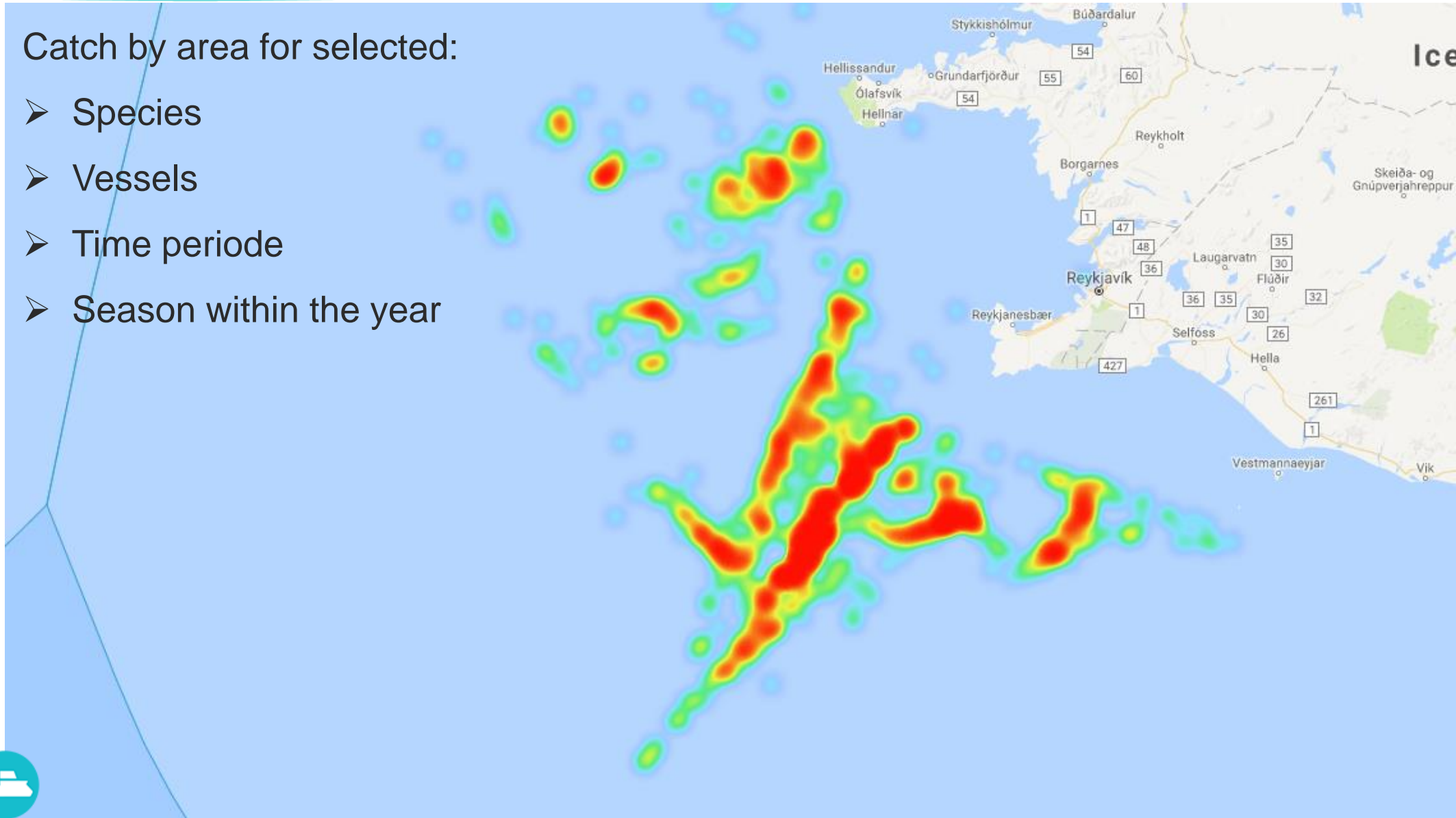
Catch information is automatically transmitted in real-time.



Access to historical data

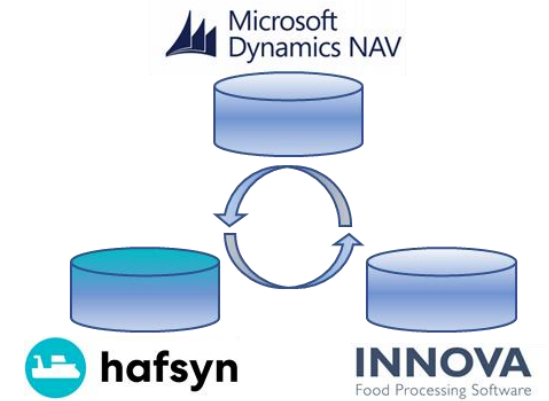
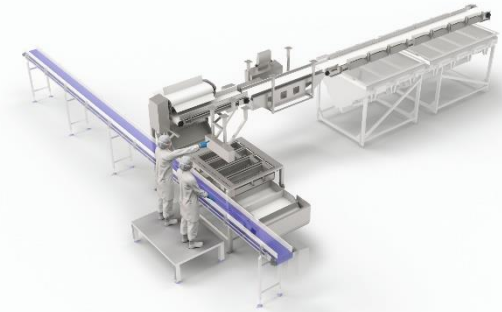
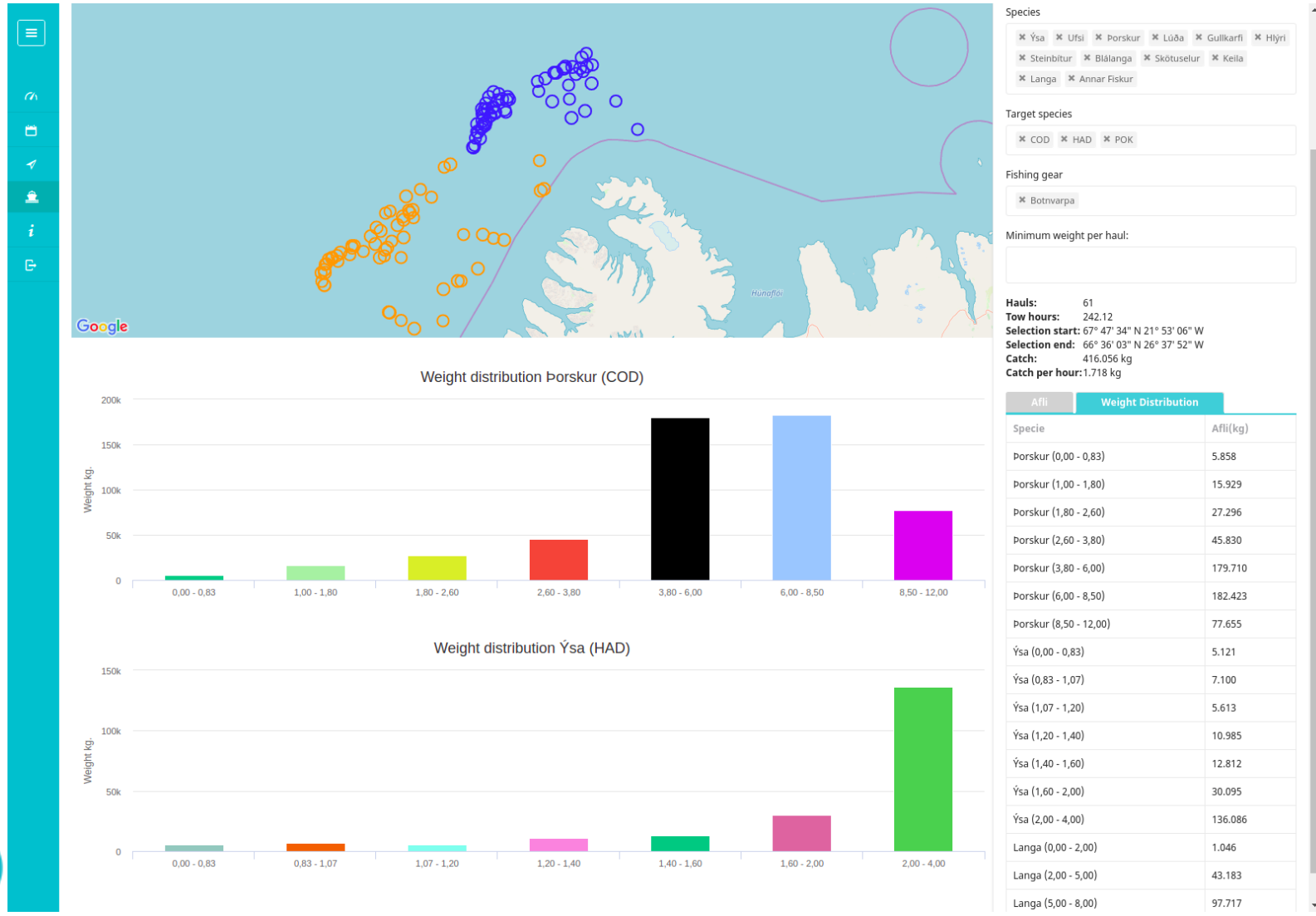
Catch by area for selected:

- Species
- Vessels
- Time periode
- Season within the year

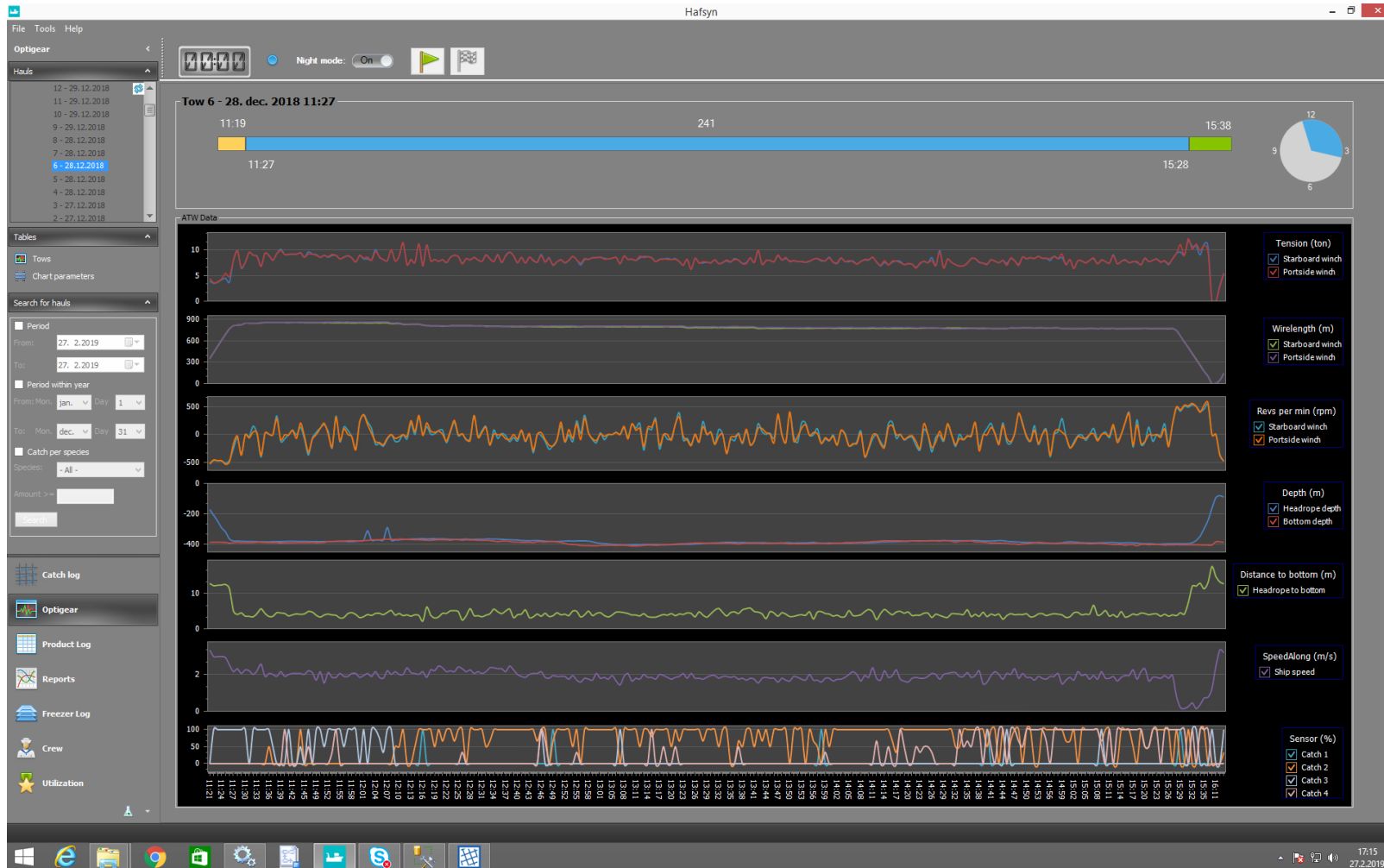


Integration to other systems

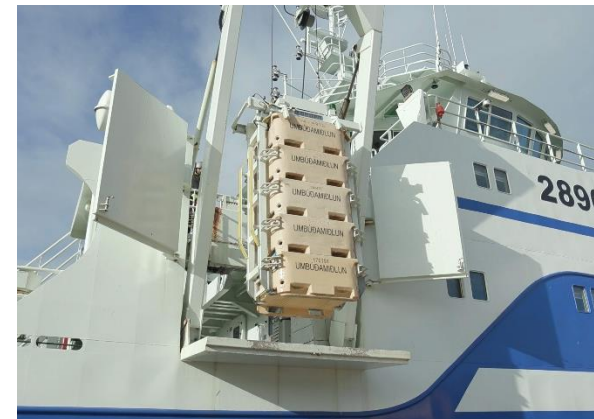
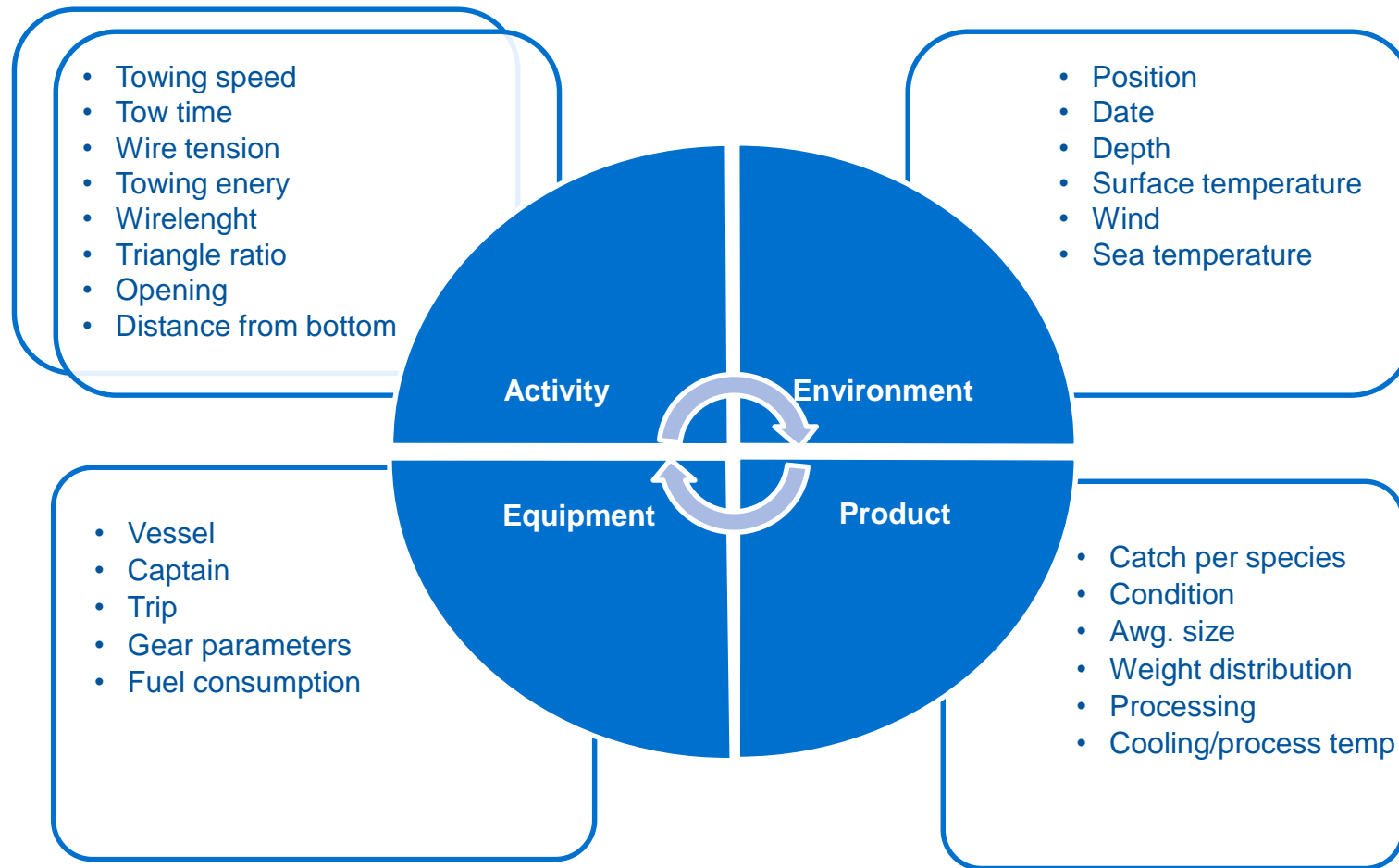
Size distribution by catch area from selected period



Connection to tow winch system and gear sensors



Information for sustainability- Trawlers





Fishing companies are meeting higher standards on traceability and sustainability

Fisheries can benefit from information related to sustainability

Easy access to data improves the decision making

hafsyn.com